

南山大学言語学研究センター 2018年度言語獲得論ワークショップ (CSLA #8)

共催: 名古屋大学大学院人文学研究科 第53回日本語教育学講座・分野講演会

Date: August 4 (Sat) 10:00 ~ 18:30

August 5 (Sun) 10:00 ~ 13:00

Venue (Place): Building L Room 910, Nanzan University

Note: Please find the campus map at www.nanzan-u.ac.jp/CMAP/nagoya/campus-nago.html

August 4 (Sat) 10:00 ~ 18:30

Ayaka Sugawara (Mie University)

Locating the associate of 'only'

Natsue Ito (Nagoya University)

Corpus studies of *wh*-questions in early childhood

Koji Sugisaki (Kwansei Gakuin University)

Scope (anti-) reconstruction in child Japanese

Keiko Murasugi (Nanzan University)

Plato's problem in lexical acquisition

Tetsuya Sano (Meiji Gakuin University)

On a developmental delay in the L1 acquisition of the Japanese
nominative object: an UPR account

Utako Minai (Kansas University)

Examining the interactions between children's meaning comprehension
and their cognitive development

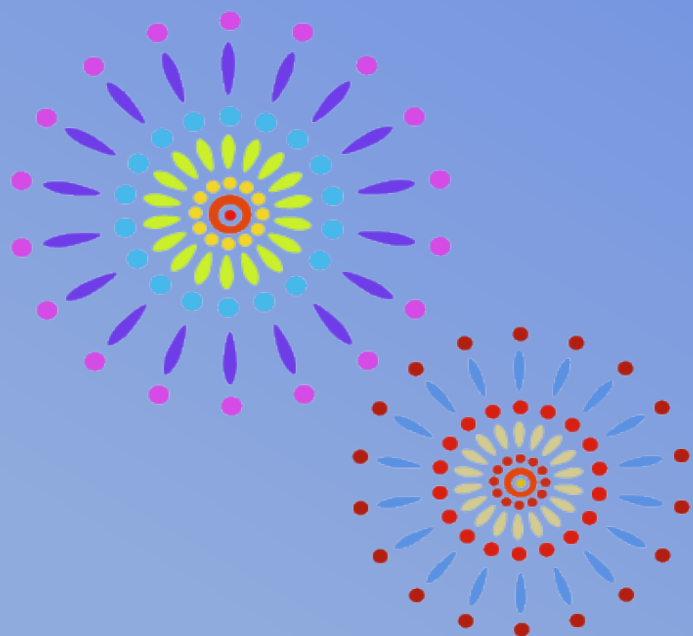
August 5 (Sun) 10:00 ~ 13:00

Kazuko Yatsushiro (ZAS, Berlin)

Without sugar or cream: disjunction in downward entailing environment
across languages

Martin Hackl (MIT)

Interaction of scalar presuppositions with language acquisition and comprehension



予約不要・入場無料

お問い合わせは 南山大学言語学研究センター:

〒466-8673 名古屋市昭和区山里町18

南山大学言語学研究センター

E-mail: ling-office@ic.nanzan-u.ac.jp

Tel: 052-832-3110 内線 3547

<http://www.ic.nanzan-u.ac.jp/LINGUISTICS/>